

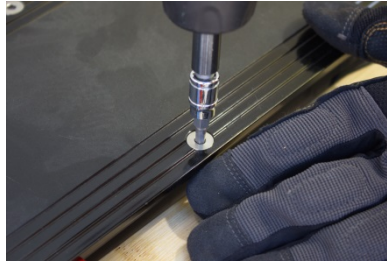
# Measure the battery's voltage



## ▶ A DEMOUNT



A0. Prepare the tools.



A1. Release 8 screws of foot deck.(by using H3 hex driver)



A2. Check the orientation of the battery. Barcode should be on the top.



A3. Lift up the battery, then you will see all connectors connected to the battery.

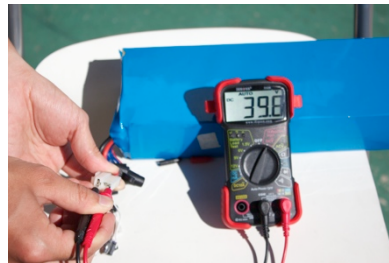


A3. Cut off all the cable tights on the connectors. Disconnect the connectors with the following labels: 1.Load and 6.Charge.

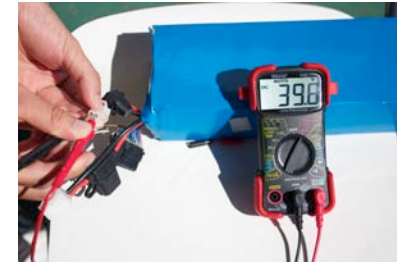
▶ **B**  
measuring



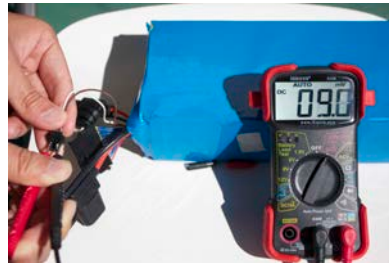
B0. There are 3 labeled connectors to the battery. Measure the one with 'load' label. The voltage should be 38~40V.



B1. Measure the connector with 'charge' label, the voltage should be 38~40V.



B2. Measure the connector with 'display' label, the voltage should be 10mv +\_?.



B3. If any of the above value is out of the range, please contact EcoReco customer service at [customerservice@ecorecoscooter.com](mailto:customerservice@ecorecoscooter.com).